



## CITY OF WYOMING

### Wyoming Business Park

Forest Blvd.

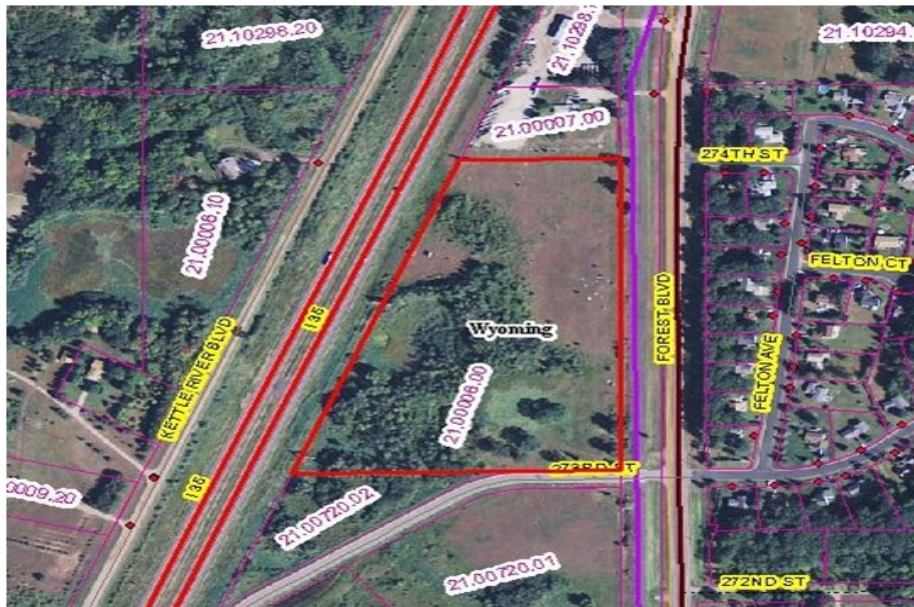
Wyoming, MN 55092

#### AVAILABLE AREA:

- 14.81 Acres
- Divisible

#### PROPERTY FEATURES:

- Freeway Frontage—1,160 Linear Ft Along I-35
- 30 Miles North of the Twin Cities
- Utilities to Site
- Will Consider Wide Variety of Uses
- Zoned Industrial
- Numerous Economic Incentives Available



#### CONTACT:

City of Wyoming

26885 Forest Blvd., Wyoming, MN 55092

Phone: 651-462-0575 Web: [www.wyomingmn.org](http://www.wyomingmn.org)